

# GENERAL PRICE LIST

Effective May 5th, 2025 | Prices subject to change without notice

The goods and services shown below are those we can provide to our customers. You may choose only the items you desire. However, any funeral arrangements you select will include a charge for our basic services and overhead. If legal or other requirements mean you must buy any items you did not specifically ask for, we will explain the reason in writing on the statement we provide describing the funeral goods and services you selected.



## PROFESSIONAL SERVICES

### BASIC SERVICES OF FUNERAL DIRECTOR AND STAFF AND OVERHEAD **\$1,195**

Our charge includes consultation with the family or responsible party; staff and facilities to respond to initial requests for service; coordinating service plans with cemetery, crematory, and/or other parties involved in the final disposition of the deceased; securing official documents and necessary registrations; sheltering of the deceased. This fee for our basic services and overhead will be added to the total cost of the funeral arrangements you select. (This fee is already included in our charges for direct cremations, immediate burials, and forwarding or receiving remains.) Additionally, this fee or a portion of it may be added to the cost of using facilities, staffing or services when our funeral home has not taken possession of or sheltered the body.

### EMBALMING **\$495**

Except in certain special cases, embalming is not required by law. Embalming may be necessary, however, if you select certain funeral arrangements, such as a funeral with viewing. If you do not want embalming, you usually have the right to choose an arrangement that does not require you to pay for it, such as a direct cremation or immediate burial.

### OTHER PREPARATION OF THE BODY

• Cosmetology, dressing, and casketing by our professional staff and/or oversight and facilities for the family to perform	<b>\$195</b>
• Professional hairdressing	<b>Price Quote</b>
• Special Restoration or Autopsy Care	<b>\$150</b>
• Professional care, washing, disinfection and posing and setting of features	<b>\$75</b>
• Refrigeration	<b>\$75/day</b>



## ADDITIONAL STAFF OVERTIME CHARGE

• Evening Arrangements and Services	<b>\$195</b>
• Saturday Arrangements, Visitations and Services	<b>\$395</b>
• Sunday or Holiday Arrangements, Visitations and Services	<b>\$495</b>

A WISE CHOICE CREMATION AND FUNERAL SERVICES WILL NOT BE RESPONSIBLE FOR ANY OVERTIME CHARGES INCURRED DUE TO SERVICE TIMES SELECTED OR EXTENDED LENGTH OF FUNERAL SERVICES

## FACILITIES/EQUIPMENT

• Use of facilities and/or equipment and staff for up to two-hour visitation	<b>\$325</b>
• Each additional hour of visitation	<b>\$100</b>
• Additional staff and equipment for off-premises visitation (coach, personnel, flower van)	<b>\$295</b>
• Use of facilities and staff and/or equipment and staff for visitation one hour prior to services	<b>\$175</b>
• Use of facilities and staff for identification viewing — 30 minute maximum	<b>\$125</b>
• Use of facilities and staff for funeral ceremony or memorial services	<b>\$395</b>
• Use of equipment and staff for off-premises funeral ceremony or memorial services	<b>\$395</b>
• Use of equipment and staff for graveside services	<b>\$215</b>
• Use of preparation facilities for private autopsy or donation	<b>\$1,000</b>

## TRANSPORTATION

Unless otherwise noted, all transportation charges contained in this General Price List apply to local area only (within a 25 mile radius of funeral home).

• Transfer of decedent to funeral home including staff and equipment	<b>\$295</b>
• Additional charge for after hours, evening (5pm to 8am), weekend, & holiday transfers	<b>\$75</b>
• Use of funeral coach for transportation to place of disposition	<b>\$315</b>
• Use of other automotive equipment (flower van, vehicle to obtain death certificate, etc.)	<b>\$125</b>
• Additional mileage charge— transportation beyond 25 miles	<b>\$3.50/Mile One Way</b>



## TRADITIONAL BURIAL PLAN **\$3,095**

When a burial casket is selected from A Wise Choice, The TRADITIONAL BURIAL PLAN is available. The plan includes our charges for:

- Basic services
- Transfer
- Embalming
- Cosmetology, dressing & casketing
- Up to 2 hour visitation at A Wise Choice
- Funeral ceremony
- Graveside committal (same day)
- Funeral coach
- Utility vehicle

By utilizing this plan. You will be afforded a savings of \$460 over the individually selected items. This plan may be added but items may not be subtracted from it. A casket must be purchased from A Wise Choice to qualify for the package discount.

## IMMEDIATE BURIALS **\$995 to \$9,390**

Our charge for an immediate burial (without ceremony) includes:

- Initial transfer of the deceased from place of death to funeral home
- A portion of the basic service charge
- Three (3) days of refrigeration
- Transportation of the deceased to the cemetery

• Immediate burial with container provided by the purchaser	<b>\$995</b>
---	--------------

• Immediate burial with casket as selected	<b>\$1,990 to \$9,390</b>
--	---------------------------

## FORWARDING OF REMAINS TO ANOTHER FUNERAL HOME **\$1,795**

This charge includes:

- Initial transfer of the deceased from place of death to funeral home
- Embalming
- A portion of the basic service charge
- Local transportation (airline or other shipping or transportation charges are not included)
- Transfer case

## RECEIVING OF REMAINS FROM ANOTHER FUNERAL HOME **\$1,495**

This charge includes:

- A portion of the basic service charge
- Care of the deceased
- Filing of local permits
- Local transportation of the deceased to cemetery or crematory



## DIRECT CREMATIONS **\$845 to \$9,040**

Our charge for a direct cremation (without ceremony) includes:

- Initial transfer of the deceased from place of death to funeral home
- A portion of the basic service charge
- Three (3) days of refrigeration
- Local transportation to the crematory (within 25 miles)
- Crematory fee

Our charge **DOES NOT** include:

- Sales tax
- Urn
- Death certificate
- Medical examiner fees

If you want to arrange a direct cremation, you can use an alternative container. Alternative containers encase the body and can be made of materials like fiberboard or composition materials (with or without an outside covering). The containers we provide are constructed of fiberboard and plywood material.

• Direct cremation with container provided by the purchaser	<b>\$845</b>
• Direct cremation with minimum alternative container	<b>\$895</b>
• Direct cremation with casket as selected	<b>\$1,170 to \$9,040</b>

## OTHER SERVICES AND FEES

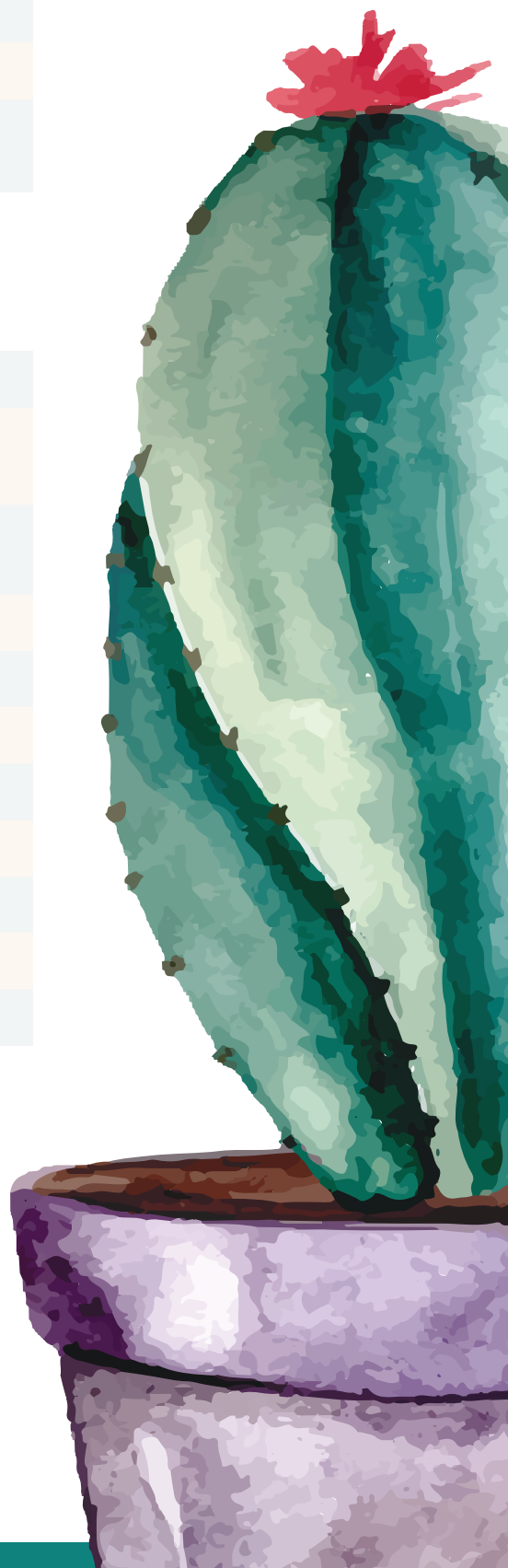
• Additional fee for cremations over 250 lbs.	<b>\$100</b>
• Automotive funeral procession escorts or limousines	<b>Price Quote</b>
• Crematory fee	<b>\$175</b>
• Delivery of cremated remains to local cemetery — within 25 miles	<b>\$75</b>
• Expedited cremation fee	<b>\$150</b>
• Insurance Assignment Fee	<b>\$295</b>
• International paperwork fee	<b>\$395</b>
• Mailing of cremated remains U.S. Postal Service	<b>\$200</b>
• Maricopa County Medical Examiners Fee	<b>\$15</b>
• Pinal County Medical Examiners Fee	<b>\$25</b>
• Mailing of Death Certificate per location	<b>\$50</b>
• Scattering of cremated remains by A Wise Choice at our convenience	<b>\$75</b>
• Live Streaming and Video Tribute	<b>Price Quote</b>

## OTHER SERVICES AND FEES

• Transfer to or from airport (Phoenix Sky Harbor) or other Maricopa County Fields	<b>\$200</b>
• Witnessing of cremation —requires 48 hours notice	<b>\$195</b>
• Placing of cremated remains into urn provided by family	<b>\$25</b>

## OTHER FUNERAL MERCHANDISE

• Acknowledgement cards — 1 box of 25	<b>\$20</b>
• Air shipping container (required by commercial airlines)	<i>With Casket</i> <b>\$195</b> <i>No Casket</i> <b>\$210</b>
• Body pouch (may be required by health institutions or medical examiners)	
• Heavyweight	<b>\$75</b>
• Lightweight	<b>\$45</b>
• Cemetery temporary marker	<b>\$45</b>
• Crucifix or Cross	<i>From</i> <b>\$35</b>
• Prayer Cards	<b>\$60</b>
• Memorial folders, first printing of 100 folders	<i>From</i> <b>\$100</b>
• Additional folders per 100	<i>From</i> <b>\$25</b>
• Register books	<b>\$30</b>





# CASKET PRICES

Effective May 5th, 2025 | Prices subject to change without notice

**Disclaimer of Warranties:** A Wise Choice Cremation and Funeral Services makes no representations or warranties regarding the caskets listed below. The only warranties, expressed or implied, granted in connection with the caskets are the expressed written warranties, if any, extended by the manufacturers thereof. A Wise Choice Cremation and Funeral Services hereby expressly disclaims all warranties, expressed or implied, relating to the caskets, including, but not limited to, implied warranties of merchantability and fitness for a particular purpose.

Material	MFR	Name	Interior	Price
METAL CASKETS				
Copper	Batesville	Y39 Aegean Copper	Champagne Velvet	\$7,200
Stainless Steel	Batesville	OR7 Greyson	Silver Premium Velvet	\$6,395
Stainless Steel	Batesville	UG1 Silver Sapphire	Silver Velvet	\$4,795
Stainless Steel	Batesville	U46 Tapestry Rose	Moss Pink Velvet	\$4,595
18 Gauge Steel	Batesville	OE1 Golden Granite	Champagne Velvet	\$3,995
18 Gauge Steel	Batesville	A60 Merlot	Champagne Velvet	\$3,795
18 Gauge Steel	Batesville	OF1 Neapolitan	Silver Sierra	\$3,395
18 Gauge Steel	Batesville	O61 Cashmere	Champagne Sierra	\$3,395
18 Gauge Steel	Batesville	OT9 Violet Bouquet	Natural Velvet	\$3,195
18 Gauge Steel	Batesville	N01 Pearl	Moss Pink Crepe	\$2,795
18 Gauge Steel	New Pointe	N02 Virgo Copper	Rosetan Crepe	\$2,895
20 Gauge Steel	New Pointe	QM2 Aries Silver	Ivory Crepe	\$2,695
20 Gauge Steel	Batesville	Q01 Sand	Rosetan Crepe	\$2,195
20 Gauge Steel	Batesville	Emeraldtone	Light Green Crepe	\$1,995
20 Gauge Steel	Batesville	Triton Brown	Ivory Crepe	\$1,595

# CASKET PRICES

Effective May 5th, 2025 | Prices subject to change without notice

**Disclaimer of Warranties:** A Wise Choice Cremation and Funeral Services makes no representations or warranties regarding the caskets listed below. The only warranties, expressed or implied, granted in connection with the caskets are the expressed written warranties, if any, extended by the manufacturers thereof. A Wise Choice Cremation and Funeral Services hereby expressly disclaims all warranties, expressed or implied, relating to the caskets, including, but not limited to, implied warranties of merchantability and fitness for a particular purpose.

Material	MFR	Name	Interior	Price
WOOD CASKETS				
Cherry	Batesville	Pembroke Cherry	Champagne Velvet	\$7,900
Maple	Batesville	Provincial Maple	Champagne Velvet	\$5,495
Sycamore	Marsellus	Prominence	Champagne Velvet	\$5,295
Oak	Batesville	Autumn Oak	Rosetan Crepe	\$3,995
Pecan	Batesville	Woodhaven Pecan	Champagne Velvet	\$3,995
Poplar	Batesville	Landon	Champagne Sierra	\$3,795
Hardwood	Batesville	Fairfield	Rosetan Crepe	\$3,795
Poplar Veneer	Batesville	Rosette	Natural Eyelet	\$3,395
Poplar Veneer	Batesville	Weston	Rosetan Crepe	\$3,395
Hardwood Veneer	Batesville	Dalton	Rosetan Crepe	\$3,395
Poplar Veneer	Batesville	Branson	Woven Saffron	\$3,395
Pine	Batesville	Finley Pine	Rosetan Crepe	\$3,195
Poplar	New Pointe	Libra Harvest Brown	Rosetan Crepe	\$2,795
Poplar	Batesville	Westridge	Rosetan Crepe	\$2,295
Poplar	Batesville	Oxford	Rosetan Crepe	\$2,395
Poplar	Batesville	Delray	Rosetan Crepe	\$2,195

# ALTERNATIVE CONTAINERS PRICES

Effective May 5th, 2025 | Prices subject to change without notice

**Disclaimer of Warranties:** A Wise Choice Cremation and Funeral Services makes no representations or warranties regarding the caskets and containers listed below. The only warranties, expressed or implied, granted in connection with the caskets and containers are the expressed written warranties, if any, extended by the manufacturers thereof. A Wise Choice Cremation and Funeral Services hereby expressly disclaims all warranties, expressed or implied, relating to the caskets and containers, including, but not limited to, implied warranties of merchantability and fitness for a particular purpose.

Material	MFR	Name	Interior	Price
CREMATION CASKETS				
Cherry	Batesville	Endicott Cherry	Champagne Velvet	\$5,750
Cherry Veneer	Batesville	Mason Cherry	Champagne Velvet	\$4,775
Pecan Veneer	Batesville	Bradbury Pecan	Champagne Velvet	\$4,100
Oak Veneer	Batesville	Sawyer Oak	Rosetan Crepe	\$3,350
Poplar	Batesville	Newport 26	Rosetan Crepe	\$2,750
Poplar	Batesville	Newport	Rosetan Crepe	\$2,475
Poplar	Batesville	Clifton	Rosetan Crepe	\$2,475
Poplar	Batesville	Serenity	Moss Pink Crepe	\$2,250
Hardboard	Batesville	Pacific Pine	Rosetan Crepe	\$1,425
Hardboard	Batesville	Bayview Beech	Ivory Crepe	\$1,300
CERMONIAL CASKETS				
Cherry	Batesville	Beckham Cherry	Champagne Velvet	\$1,395
Oak	Batesville	Brockton Oak	Rosetan Crepe	\$1,195
Poplar	Batesville	Linford Poplar	Rosetan Crepe	\$995
ALTERNATIVE CREMATION CONTAINERS				
Hardboard	Batesville	Shaker Pine	Ivory Crepe	\$995
Wood Composite	PBF	Saguaro Series	White/Rosetan Crepe	\$850
Wood Composite	PBF	Octillo Series	White/Rosetan Crepe	\$650
Cardboard	Batesville	Caden	Ivory Crepe	\$650
Wood Composite	PBF	Cholla - Series	White Crepe	\$550



# ALTERNATIVE CONTAINERS PRICES

Effective May 5th, 2025 | Prices subject to change without notice

**Disclaimer of Warranties:** A Wise Choice Cremation and Funeral Services makes no representations or warranties regarding the caskets and containers listed below. The only warranties, expressed or implied, granted in connection with the caskets and containers are the expressed written warranties, if any, extended by the manufacturers thereof. A Wise Choice Cremation and Funeral Services hereby expressly disclaims all warranties, expressed or implied, relating to the caskets and containers, including, but not limited to, implied warranties of merchantability and fitness for a particular purpose.

Material	MFR	Name	Interior	Price
ALTERNATIVE CREMATION CONTAINERS				
Wood Composite	Batesville	Standard Brown	Ivory Crepe	\$450
Cardboard	Batesville	Trayview 27	Mattress & Pillow	\$375
Cardboard	Batesville	Baden	Mattress & Pillow	\$325
Wood Composite	PBF	Pima	Mattress & Pillow	\$325
Cardboard/Wood	PBF	Cardboard Container Tray w/ Wood Base	N/A	\$145
Cardboard	PBF	Cardboard Container (Up to 200 lbs.)	N/A	\$50

## NOTES



# OUTER BURIAL CONTAINERS PRICES

Effective May 5th, 2025 | Prices subject to change without notice

**Disclaimer of Warranties:** A Wise Choice Cremation and Funeral Services makes no representations or warranties regarding the protective value of the outer burial containers other than those made by the manufacturer. The only warranties, expressed or implied, granted in connection with the goods sold are the expressed written warranties, if any, extended by the manufacturer thereof. A Wise Choice Cremation and Funeral Services hereby expressly disclaims all warranties, expressed or implied, relating to the outer burial containers, including, but not limited to, implied warranties of merchantability and fitness for a particular purpose.

Manufacturer	Name	Composition	Price
PROTECTIVE*			
Wilbert	Bronze	Concrete/32-oz. Bronze Liner	\$15,000
Wilbert	Bronze Triune	Concrete/Bronze Liner	\$5,495
Wilbert	Copper Triune	Concrete/Copper Liner	\$5,495
Wilbert	Stainless Steel Triune	Concrete/Stainless Steel Liner	\$3,595
Wilbert	Cameo Rose	Concrete/Stainless Steel Liner	\$3,595
Wilbert	Veteran	Concrete/Stainless Steel Liner	\$3,595
Wilbert	Venetian	Concrete/Marbelon Liner	\$2,595
Wilbert	Citadel	Concrete/Strentex Liner-FLAT TOP	\$1,995
Wilbert	Salute	Concrete/Strentex Liner	\$1,795
Wilbert	Monticello	Concrete/Strentex Liner	\$1,795
NON-PROTECTIVE**			
Mickelson & Ray	Grave Box	Concrete	\$1,195

- Life's Reflections personalization **No Charge**  
(available on Venetian & Triune Series only)
- Legacy Series personalization **\$75**  
(available on Triune Series only)
- Custom Legacy **\$150**
- All protective vaults available in the color of your choice.

In most areas of the country, state or local law does not require that you buy a container to surround the casket in the grave. However, many cemeteries require that you have such a container so that the grave will not sink in. Either a grave liner or a burial vault will satisfy these requirements.

**\*Protective outer burial container prices include delivery and complete service with Wilbert Way vault lowering device.**

**\*\*Non-Protective outer burial container prices include delivery to cemetery**